

**Anti-CSF2 / GM-CSF Reference Antibody (gimsilumab)
Recombinant Antibody
Catalog # APR10853****Specification**

Anti-CSF2 / GM-CSF Reference Antibody (gimsilumab) - Product Information

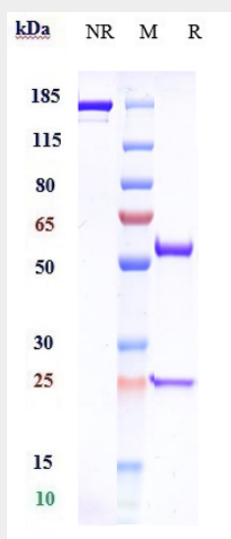
Application	FC, Kinetics, Animal Model
Primary Accession	P04141
Reactivity	Human
Clonality	Monoclonal
Isotype	IgG1
Calculated MW	145 KDa

Anti-CSF2 / GM-CSF Reference Antibody (gimsilumab) - Additional Information**Target/Specificity**
CSF2 / GM-CSF**Endotoxin**
< 0.001EU/ µg,determined by LAL method.**Conjugation**
Unconjugated**Expression system**
CHO Cell**Format**
Purified monoclonal antibody supplied in PBS, pH6.0, without preservative.This antibody is purified through a protein A column.**Anti-CSF2 / GM-CSF Reference Antibody (gimsilumab) - Protein Information****Name** CSF2**Synonyms** GMCSF**Function**
Cytokine that stimulates the growth and differentiation of hematopoietic precursor cells from various lineages, including granulocytes, macrophages, eosinophils and erythrocytes.**Cellular Location**
Secreted**Anti-CSF2 / GM-CSF Reference Antibody (gimsilumab) - Protocols**

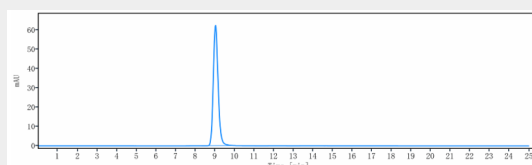
Provided below are standard protocols that you may find useful for product applications.

- [Western Blot](#)
- [Blocking Peptides](#)
- [Dot Blot](#)
- [Immunohistochemistry](#)
- [Immunofluorescence](#)
- [Immunoprecipitation](#)
- [Flow Cytometry](#)
- [Cell Culture](#)

Anti-CSF2 / GM-CSF Reference Antibody (gimsilumab) - Images



Anti-CSF2 / GM-CSF Reference Antibody (gimsilumab) on SDS-PAGE under reducing (R) condition. The gel was stained with Coomassie Blue. The purity of the protein is greater than 95%



The purity of Anti-CSF2 / GM-CSF Reference Antibody (gimsilumab) is more than 95% ,determined by SEC-HPLC.